

ECHO



www.bearcatproducts.com

5 INCH CHIPPER

CH5653 - 653cc SUBARU

PARTS MANUAL



Manual PN: 31603-00
Rev. 010113

Companion to 31602-00

VIN Range: 5VJAA0000DW000001 - CURRENT

Before You Begin

DEAR ECHO BEAR CAT CUSTOMER

Thank you for purchasing a ECHO Bear Cat product. The ECHO Bear Cat line is designed, tested, and manufactured to give years of dependable performance. To keep your machine operating at peak efficiency, it is necessary to adjust it correctly and make regular inspections. The following pages will assist you in the operation and maintenance of your machine. Please read and understand this manual before operating your machine.

If you have any questions or comments about this manual, please call us toll-free at 1-800-247-7335.

If you have any questions or problems with your machine, please call or write your local authorized ECHO Bear Cat Dealer.

This document is based on information available at the time of its publication. ECHO Bear Cat is continually making improvements and developing new equipment. In doing so, we reserve the right to make changes or add improvements to our product without obligation for equipment previously sold.

PLEASE SEND US YOUR WARRANTY CARD

A warranty card is included in your owner's kit packaged with your machine. Please take the time to fill in the information requested on the card. When you send your completed card to us, we will register your machine and start your coverage under our limited warranty.

FOR MACHINE SERVICE OR PARTS:

For service assistance, contact your nearest authorized ECHO Bear Cat dealer or the factory. For parts, contact your authorized dealer. The parts manual for your machine is available at <http://bearcatproducts.com/main/support/index.html>. Your dealer will need to know the identification number of your machine to provide the most efficient service. See below for information on how to identify and record the identification number for your machine.

FOR ENGINE SERVICE OR PARTS:

For engine service or parts, contact your nearest authorized engine dealer. ECHO Bear Cat does not handle any parts, repairs or warranties for engines.

ORDERING PARTS

Only genuine ECHO Bear Cat replacement parts should be used to repair the machine. Replacement parts manufactured by others could present safety hazards, even though they may fit on this machine. Replacement parts are available from your ECHO Bear Cat dealer.

Provide the following when ordering parts:

The SERIAL NUMBER OR VIN of your machine.

The PART NUMBER of the part.

The PART DESCRIPTION.

The QUANTITY needed.

IDENTIFICATION NUMBER LOCATION

Your machine will have either a serial number or vehicle identification number (VIN). VINs are located on the left side of the trailer frame near the hitch. They are 17-digit numbers of the format: 5VJAA001XXWXXXXXX. Serial numbers are located on the machine body. They are 6-digit numbers.

Record your identification number in the space provided and on the warranty registration card.

SERIAL NUMBER OR VIN

HOW TO CONTACT ECHO BEAR CAT

ADDRESS	PHONE	E-MAIL	HOURS
237 NW 12th Street P.O. Box 849 West Fargo, ND 58078	888.625.4520 701.282.5520 FAX: 701.282.9522	sales@bearcatproducts.com service@bearcatproducts.com	Monday - Friday, 8 am to 5 pm Central Time

Is my machine CE Compliant?

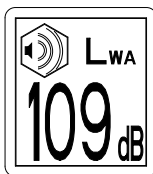


The CE marking (also known as the “CE mark”) is a mandatory compliance mark on products sold internationally where CE standards are enforced and in the European Economic Area (EEA). The CE marking certifies that a product has met European Union (EU) consumer safety, health or environmental requirements. By affixing the CE marking to our products, Echo Bear Cat declares that it meets EU safety, health and environmental requirements.



Echo Bear Cat products that are CE compliant will be clearly marked with an identifying “CE” decal. These products feature safety and other engineering features that non-CE compliant products do not have. Non-CE compliant Echo Bear Cat products are primarily sold in countries and regions that do not require or enforce mandatory CE certification. However, this is not true for all countries and regions. If you are unsure of CE requirements for the country or region in which you live, please contact your nearest Echo Bear Cat dealer or distributor.

Other CE Model Identifying Decals



Echo Bear Cat products that are CE compliant will also be labeled with a decibal level warning decal. This decal notes the decibal level of noise created while the machine is operating under normal conditions.



Machine Mass: XXX kg (XXX lb)
Nominal Power: XX KW (XXX cc)
@ XXXX RPM

CE compliant Echo Bear Cat products will also have a CE compliance information decal detailing weight and power specifications for the specific model on which it is found.

CE Compliant Decal Location

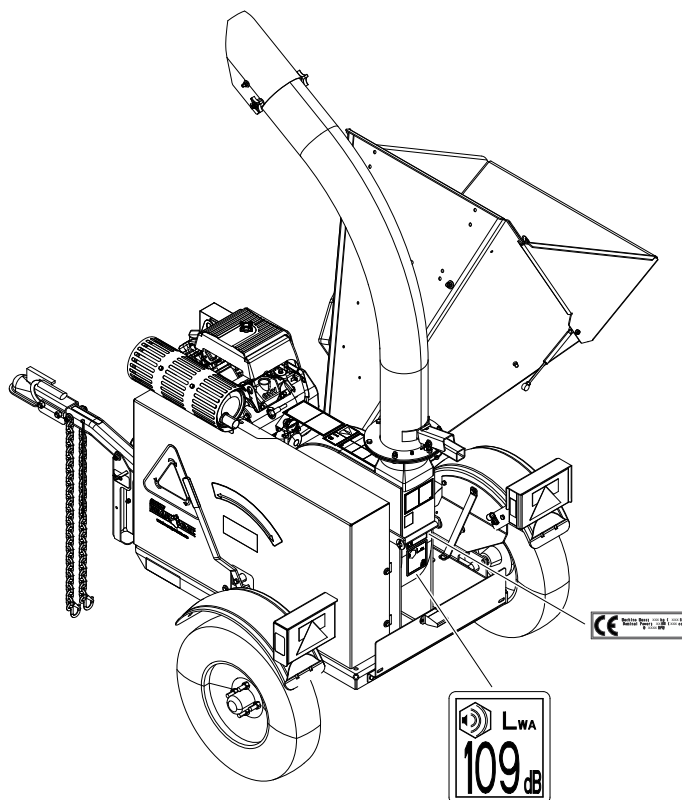
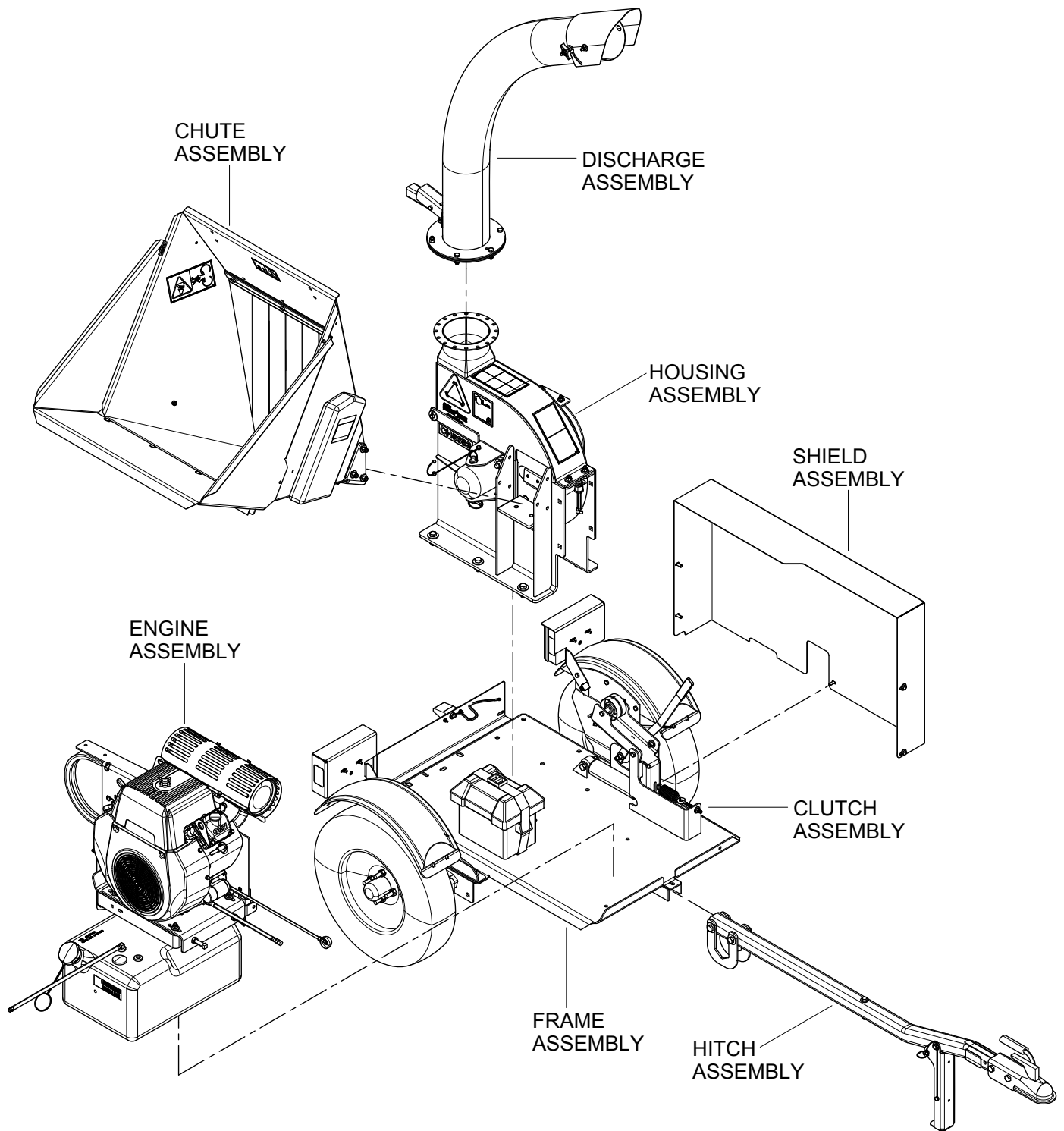
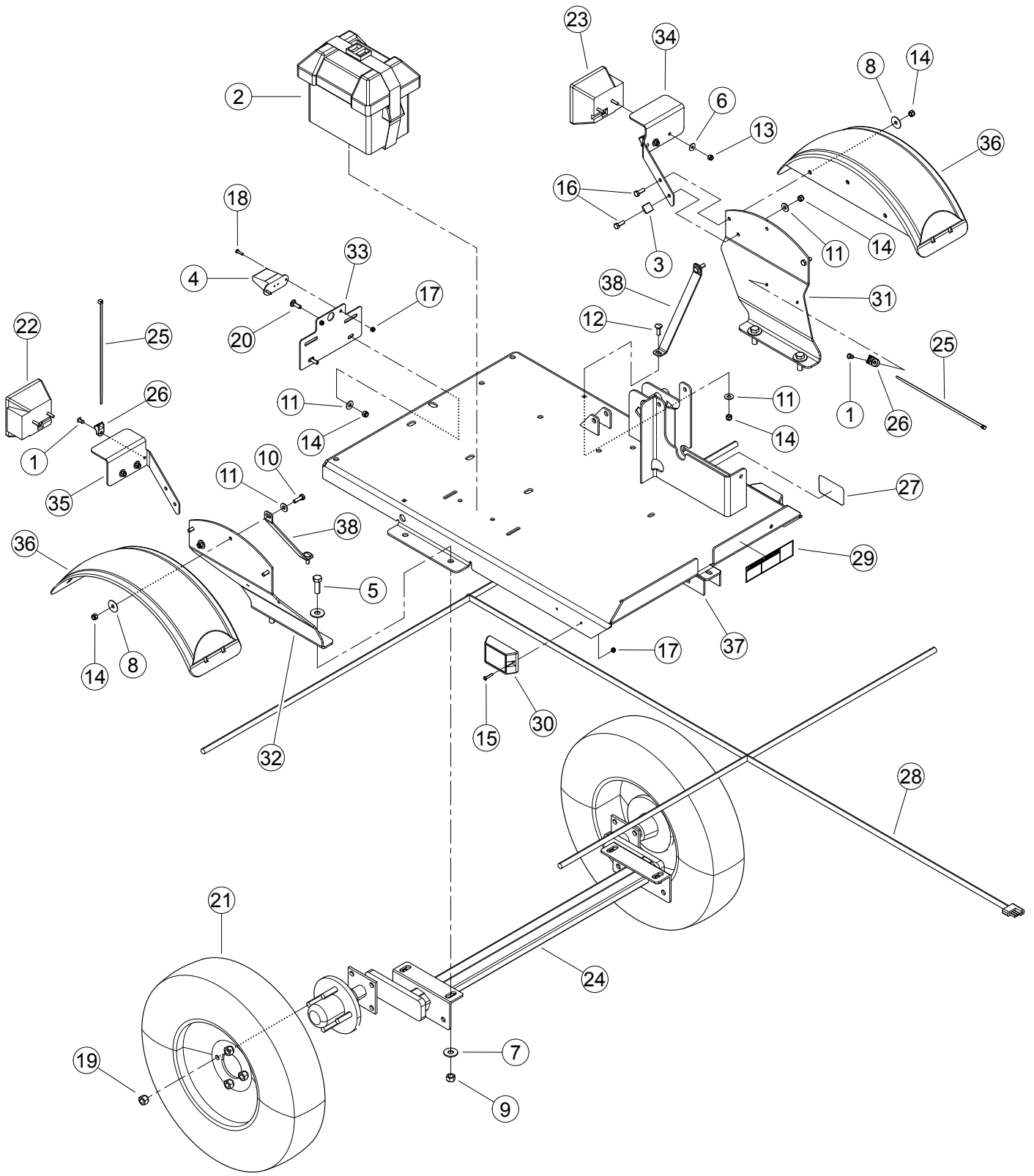


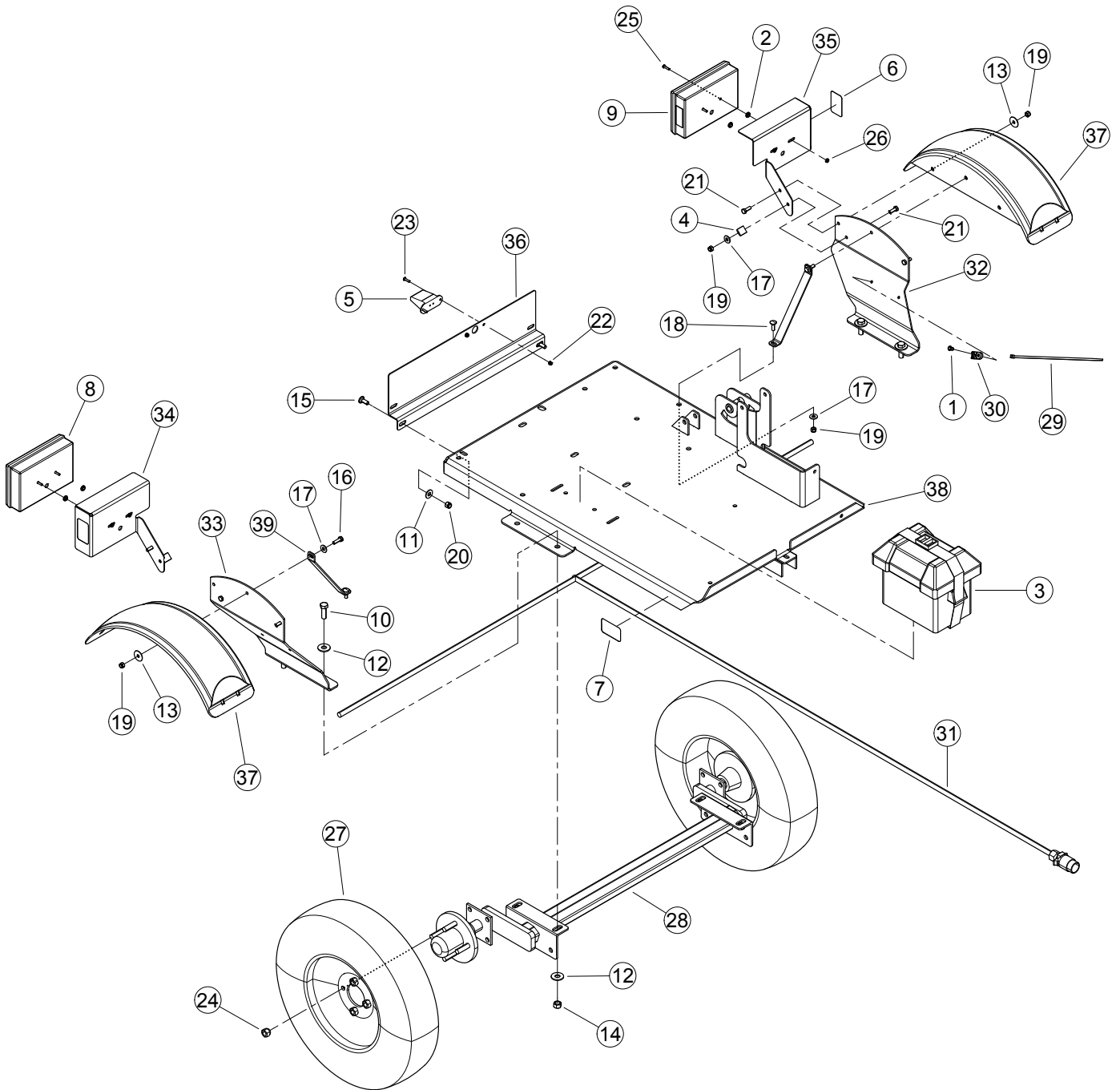
TABLE OF CONTENTS

DESCRIPTION	PAGE
EXPLODED VIEW	1
FRAME	2
<i>NON-CE COMPLIANT</i>	
FRAME	4
<i>CE COMPLIANT</i>	
HOUSING	6
ROTOR	8
ENGINE	10
IDLER	12
SHIELDS	14
CHUTE	16
<i>NON-CE COMPLIANT</i>	
CHUTE	18
<i>CE COMPLIANT</i>	
DISCHARGE CHUTE	20
TRAILER HITCH	22
<i>NON-CE COMPLIANT</i>	
TRAILER HITCH	24
<i>CE COMPLIANT</i>	
SERVICE PARTS & ACCESSORIES	25

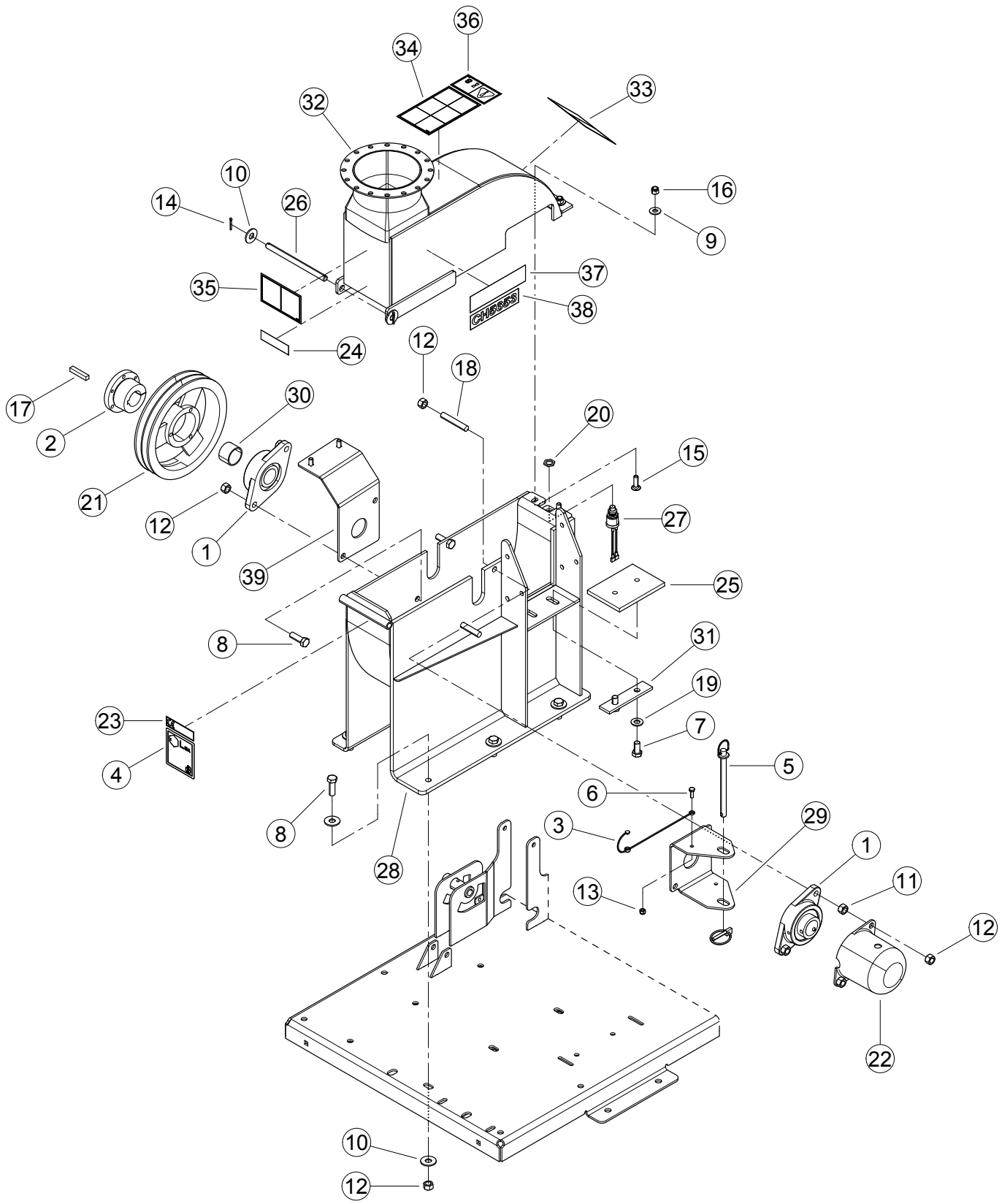




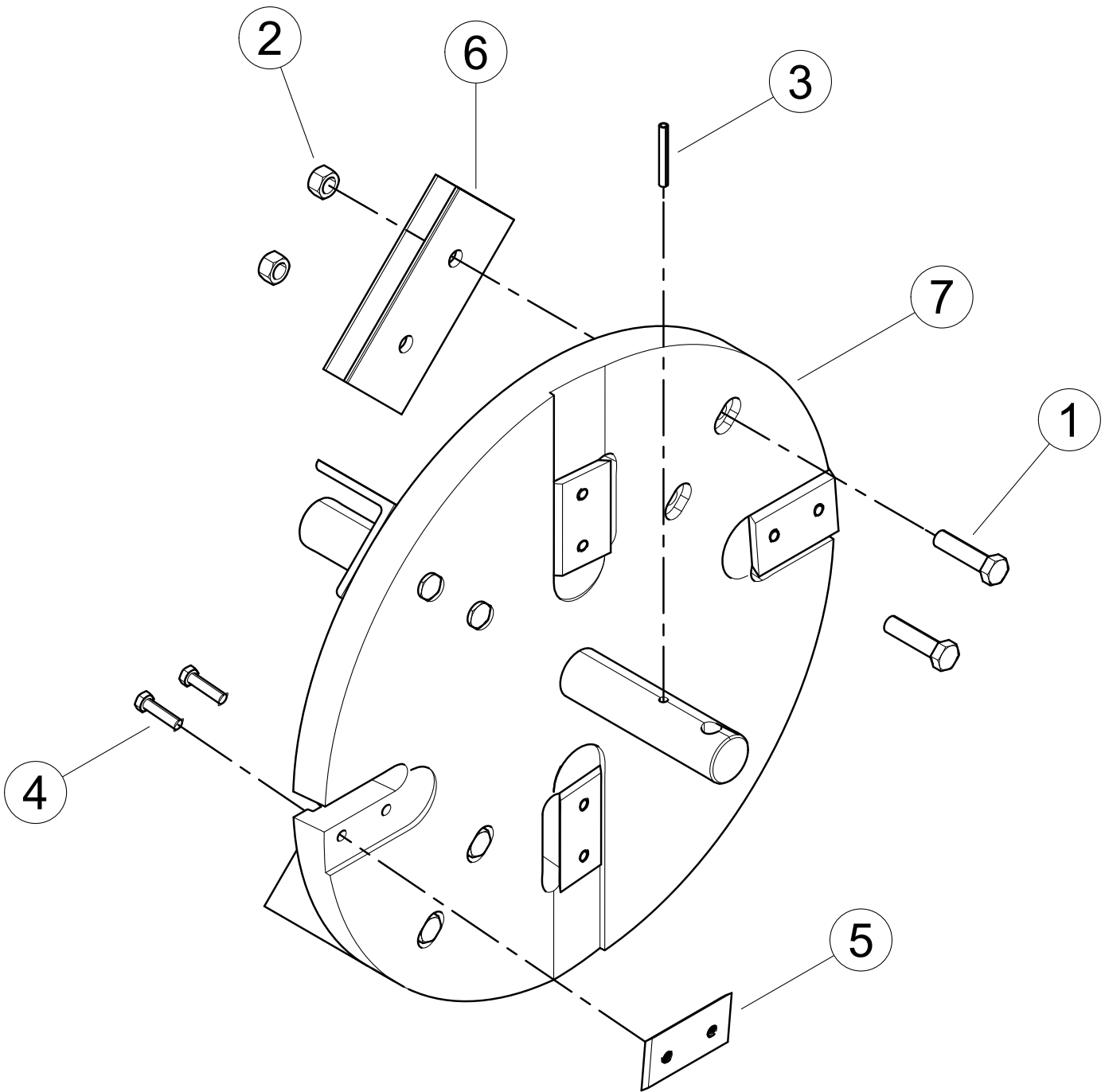
ITEM	PART NUMBER	DESCRIPTION
1	0111-0058-00	RIVET, 1/4 X 3/4 ST POP
2	12839	BOX, SMALL BATTERY
3	14048-00	CLAMP, 9/16" COATED
4	14368-00	LIGHT, LICENSE PLATE
5	15014	BOLT, 1/2 X 1-1/2 HEX HD GR5 ZP
6	15030	WASHER, 1/4 FLAT ZP
7	15034	WASHER, 1/2 FLAT ZP
8	15040	WASHER, 5/16 FENDER ZP
9	15049	NUT, 1/2 CENTERLOCK GRB ZP
10	15219	BOLT, 5/16 X 1 HEX HD GR5 NC ZP
11	15250	WASHER, 5/16 FLAT ZP
12	15301	BOLT, 5/16 X 1 CRG GR5 ZP
13	15355	NUT, 1/4 NE NYLOCK ZP
14	15356	NUT, 5/16 NE NYLOCK ZP
15	15393	MACH. SCREW, 10-24 X 1 RND HD PHL ZP
16	15396	BOLT, 5/16 X 7/8 HHCS NC GR5 ZP
17	15397	NUT, 10/24 NYLOCK TYPE NM, ZP
18	15460	MACHINE SCREW, #10-24 X 3/4 PAN HD PH ZP
19	15527	NUT, 1/2-20 WHEEL
20	15819-00	BOLT, 5/16 X 1 CRG GR5 UNPLATED
21	16548	ASSEMBLY, 5.30-12 TIRE + SPOKE RIM
22	16903	LIGHT, LH TAIL
23	16904	LIGHT, RH TAIL
24	16917	AXLE, 1000LB TORSION
25	17320	STRAP, 11 IN BLACK TIE
26	18549-00	CLAMP, CABLE MOUNT
27	32156-00	DECAL, 5.30-12 LOAD RATING
28	32326-00	HARNESS, CHIPPER TRAILER
29	32330-00	DECAL, CHECK WHEELS
30	32347-00	LIGHT, AMBER SIDE MARKER
31	75541-12	BRACKET, LH FENDER
32	75542-12	BRACKET, RH FENDER
33	75543-12	PLATE, LICENSE
34	75548-12	BRACKET, LIGHT LH
35	75549-12	BRACKET, LIGHT RH
36	76624-00	FENDER, BLACK PLASTIC DRILLED
37	76781-12	WELDMENT, CHIPPER TRAILER
38	76976-12	BRACKET, FENDER



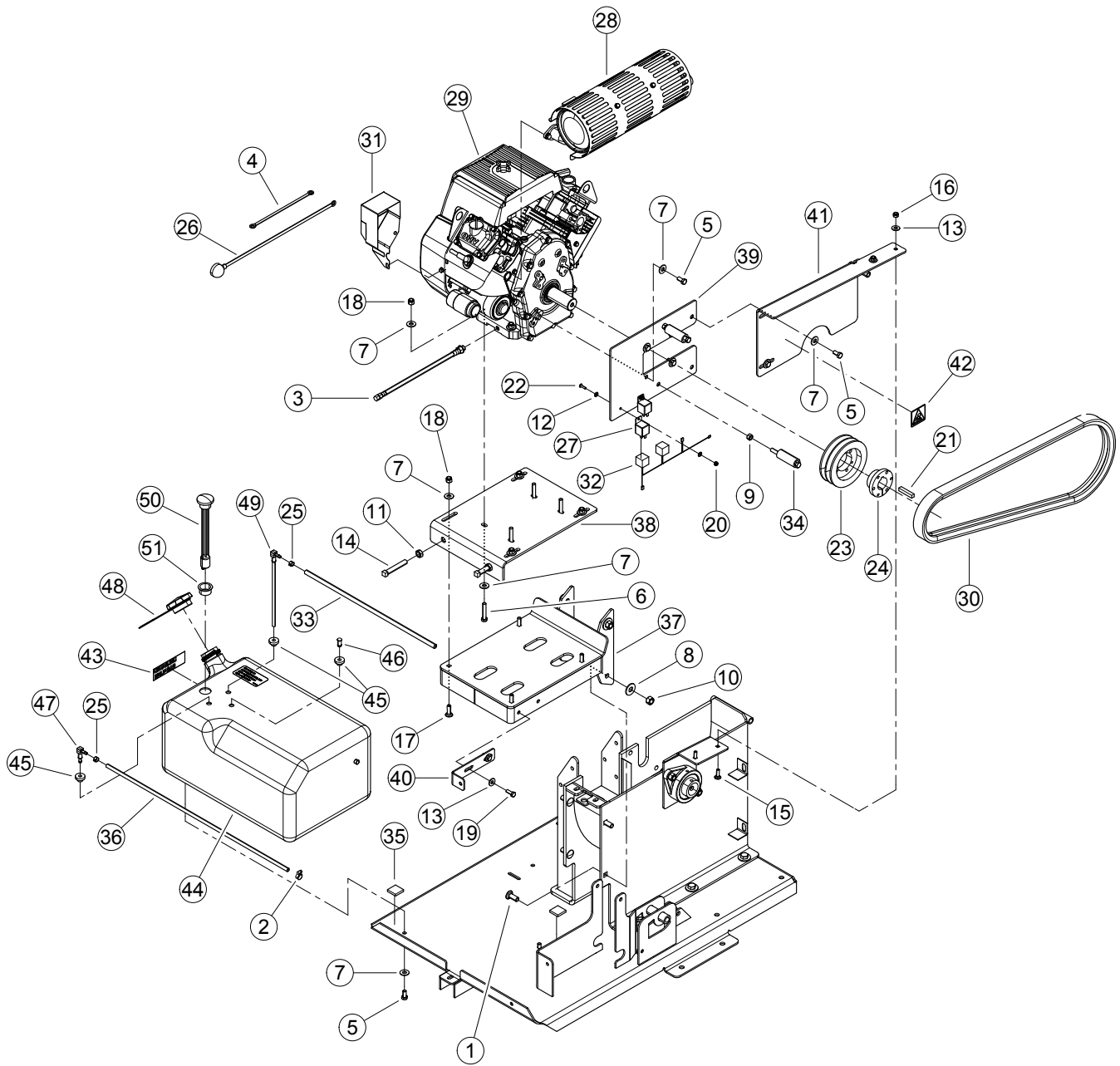
ITEM	PART NUMBER	DESCRIPTION
1	0111-0058-00	RIVET, 1/4 X 3/4 ST POP
2	0934-0004-00	GROMMET, 1/4 X 5/8 RUBBER
3	12839	BOX, SMALL BATTERY
4	14048-00	CLAMP, 9/16" COATED
5	14368-00	LIGHT, LICENSE PLATE
6	14374-00	REFLECTOR, WIDE ANGLE RED
7	14375-00	REFLECTOR, WIDE ANGLE AMBER
8	14566-00	LIGHT, TAIL RH
9	14580-00	LIGHT, TAIL LH
10	15014	BOLT, 1/2 X 1-1/2 HEX HD GR5 ZP
11	15031	WASHER, 3/8 FLAT ZP
12	15034	WASHER, 1/2 FLAT ZP
13	15040	WASHER, 5/16 FENDER ZP
14	15049	NUT, 1/2 CENTERLOCK GRB ZP
15	15057	BOLT, 3/8 X 1 CRG GR5 NC ZP
16	15219	BOLT, 5/16 X 1 HEX HD GR5 NC ZP
17	15250	WASHER, 5/16 FLAT ZP
18	15301	BOLT, 5/16 X 1 CRG GR5 ZP
19	15356	NUT, 5/16 NE NYLOCK ZP
20	15388	NUT, 3/8 NE NYLOCK ZP
21	15396	BOLT, 5/16 X 7/8 HHCS NC GR5 ZP
22	15397	NUT, 10/24 NYLOCK TYPE NM, ZP
23	15460	MACHINE SCREW, #10-24 X 3/4 PAN HD PH ZP
24	15527	NUT, 1/2-20 WHEEL
25	15557	BOLT, 10-24 X 3/4 HEX HD GR8 PLAIN
26	15830-00	NUT, #10-24 K-LOCK ZP
27	16548	ASSEMBLY, 5.30-12 TIRE + SPOKE RIM
28	16917	AXLE, 1000LB TORSION
29	17320	STRAP, 11 IN BLACK TIE
30	18549-00	CLAMP, CABLE MOUNT
31	36202-00	HARNESS, C/S TRAILER
32	75541-12	BRACKET, LH FENDER
33	75542-12	BRACKET, RH FENDER
34	75553-12	BRACKET, LIGHT
35	75554-12	BRACKET, LIGHT
36	75555-12	PLATE, MOUNTING
37	76624-00	FENDER, BLACK PLASTIC DRILLED
38	76781-12	WELDMENT, CHIPPER TRAILER
39	76976-12	BRACKET, FENDER



ITEM	PART NUMBER	DESCRIPTION
1	12117	BEARING, 1-1/2" 2-BOLT SET SCREW
2	12441	BUSHING, SK 1-1/2"
3	12530	LANYARD, NYLON
4	14187-00	DECAL, 109 DB (CE COMPLIANT ONLY)
5	14544-00	PIN, HITCH 1/2 X 6-1/2 W/LYNCH
6	15001	BOLT, 1/4 X 3/4 HEX HD GR5 ZP
7	15012	BOLT, 1/2 X 1 HEX HD GR5 ZP
8	15013	BOLT, 1/2 X 1-1/4 HEX HD GR5 ZP
9	15031	WASHER, 3/8 FLAT ZP
10	15034	WASHER, 1/2 FLAT ZP
11	15043	NUT, 1/2 HEX NC ZP
12	15049	NUT, 1/2 CENTERLOCK GRB ZP
13	15355	NUT, 1/4 NE NYLOCK ZP
14	15375	PIN, 1/8 X 1.00 ZP COTTER
15	15378	BOLT, 3/8 X 1-1/4 CRG GR5 NC ZP
16	15388	NUT, 3/8 NE NYLOCK ZP
17	15440	KEY, 3/8 SQUARE X 2 LONG PLAIN
18	15481	STUD, 1/2-13 X 3 LONG B7 ZP
19	15762-00	WASHER, 1/2 HI-STRENGTH SAE ZP
20	15775-00	NUT, 5/8-32 JAM
21	16323	SHEAVE, 2B 9.4 SK
22	16460	CAP, LARGE SHAFT
23	31604-00	DECAL, CH5653 INFORMATION (CE COMPLIANT ONLY)
24	31890-00	DECAL, ATLANTIC BRIDGE LTD INFO (CE COMPLIANT ONLY)
25	72420-12	ANVIL, 4 INCH CHIPPER
26	72974	SHAFT, CHIPPER TOP PIVOT
27	76622-00	ASSEMBLY, SEALED SWITCH
28	76786-35	WELDMENT, CHIPPER BOTTOM
29	76787-12	BRACKET, ROTOR LOCK
30	76938-12	TUBE, 1.75 OD X .109 WALL X 1.250
31	76939-12	STRIP, ADJUSTOR BLOCK
32	76974-00	ASSEMBLY, CHIPPER TOP W/DECALS, SERVICE PART (INCLUDES ITEMS 33 - 38)
33	12169	DECAL, KNIFE ACCESS ISO
34	12172	DECAL, OPERATING INSTRUCTIONS ISO
35	12173	DECAL, DISCHARGE ISO
36	12250	DECAL, MAINTENANCE ISO
37	17913	DECAL, ECHO BEARCAT 6.82 X 1.90
38	31464-00	DECAL, MODEL CH5653
39		WAS 76941-00, BELT GUARD SUPPORT (REPLACED AND SUPERSEDED BY 77249-12, BELT GUARD SUPPORT)
	77249-12	WELDMENT, BELT GUARD SUPPORT

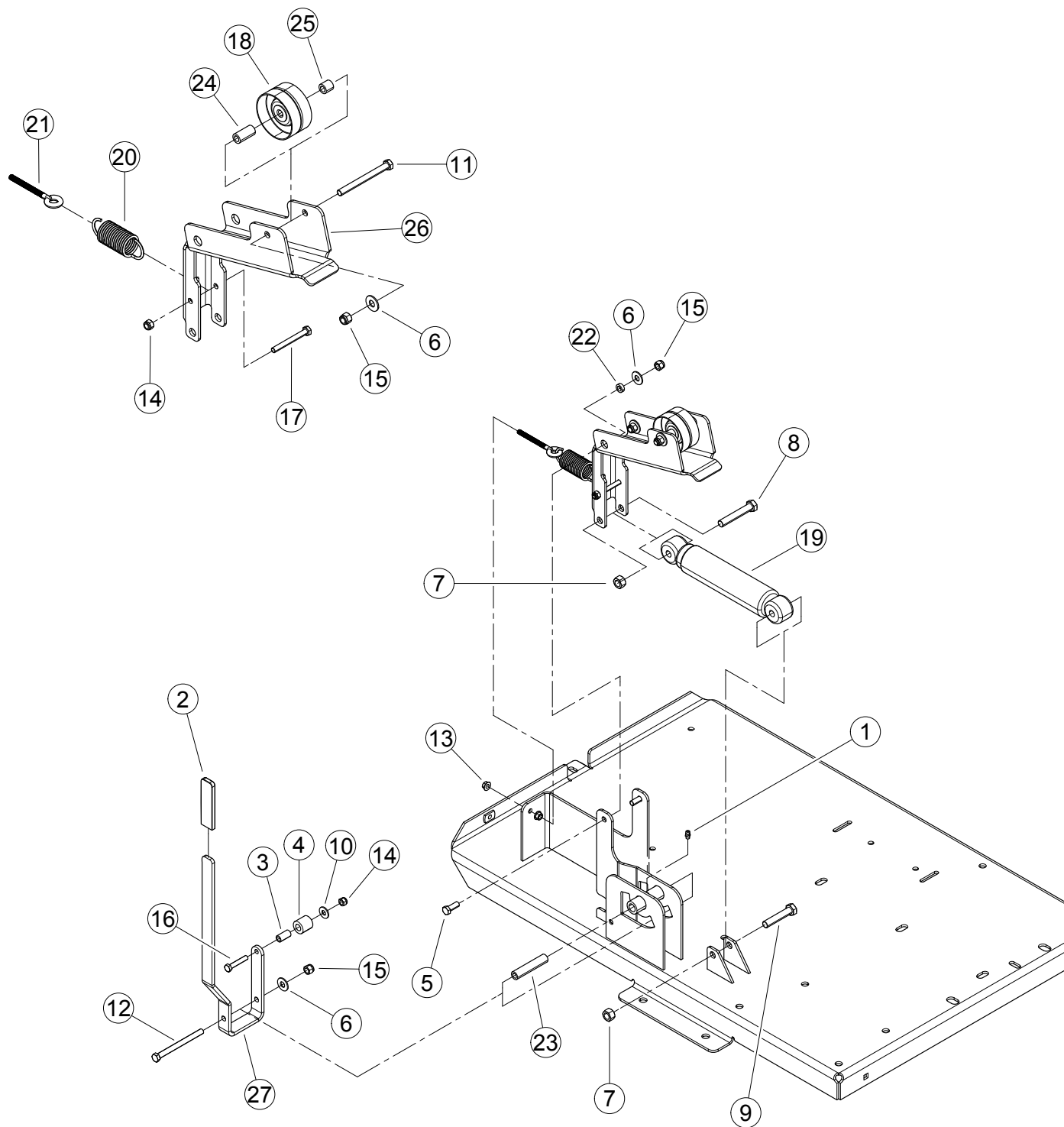


ITEM	PART NUMBER	DESCRIPTION
1	15015	BOLT, 1/2 X 2 HEX HD GR5 ZP
2	15049	NUT, 1/2 CENTERLOCK GRB ZP
3	15137	SPRING PIN, 1/4 X 2 LONG
4	15565	BOLT, 5/16 X 1-1/4 HHD GR8 PATCH
5		BLADE, TWO EDGE TOOL STEEL (FOR SERVICE ORDER CHIPPER BLADE REPLACEMENT KIT, PN 72493)
	72493	KIT, CHIPPER BLADE
6	72411	ANGLE, CHIPPER THROWER
7	76789-00	WELDMENT, CHIPPER DISK

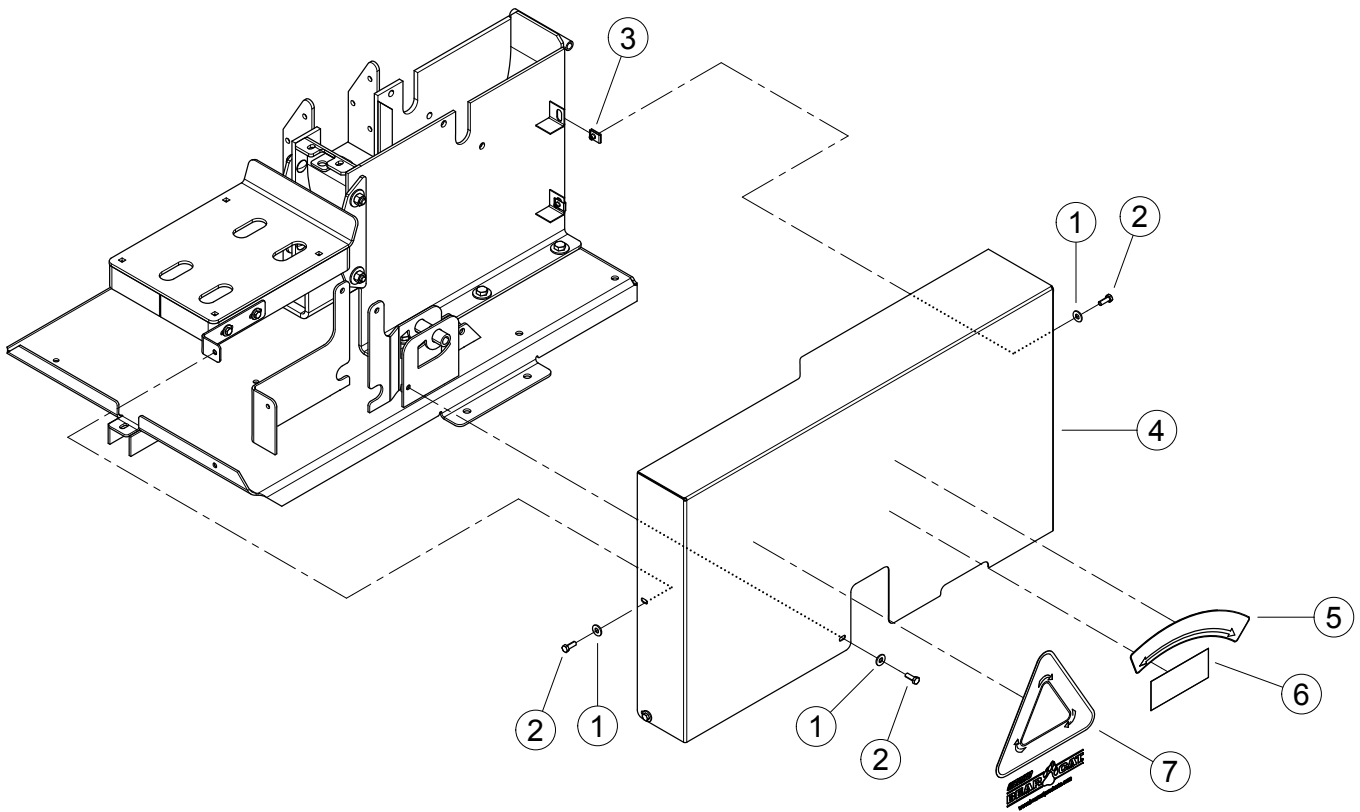


28	31444-00	MUFFLER, SUBARU V-TWIN
29	31459-00	ENGINE, 653CC SUBARU EH65
30	31460-00	BELT, 2BRP67
31	31489-00	CONTROL, SUBARU V-TWIN IGNITION
32	31610-00	HARNES, CARB SAFETY RELEAY
33	71379	HOSE, 20" FUEL LINE
34	73678-12	WELDMNT, BELT GUIDE
35	76477-00	PAD, FOAM FUEL TANK DAMPER
36	76771-00	HOSE, 28" FUEL LINE 1/4"
37	76793-12	WELDMNT, ENGINE BASE
38	76795-12	WELDMNT, ENGINE MOUNT PLATE
39	76799-12	WELDMNT, BELT SHIELD BRACKET
40	76937-12	WELDMNT, SHIELD BRACKET
41	76975-00	ASSEMBLY, BELT GUIDE, SERVICE PART (IN-CLUDES ITEM 42)
42	12174	DECAL, SHIELD DANGER ISO
43	77608-00	ASSEMBLY, FUEL TANK 9 GAL EPA
44	18982-00	DECAL, UNLEADED GASOLINE
45	32514-00	TANK, 9 GAL ROTOMOLDED FUEL
46	36689-00	GROMMET, TANK FITTING
47	36690-00	PLUG, TANK VENT
48	36691-00	FITTING, TANK VENT
49	36692-00	CAP, FUEL TANK SEALED CARB
50	36694-00	FITTING, TANK FUEL PICK-UP TUBE
51	36695-00	GAUGE, FUEL LEVEL KELCH 100
	36696-00	GROMMET, KELCH 100 GAUGE

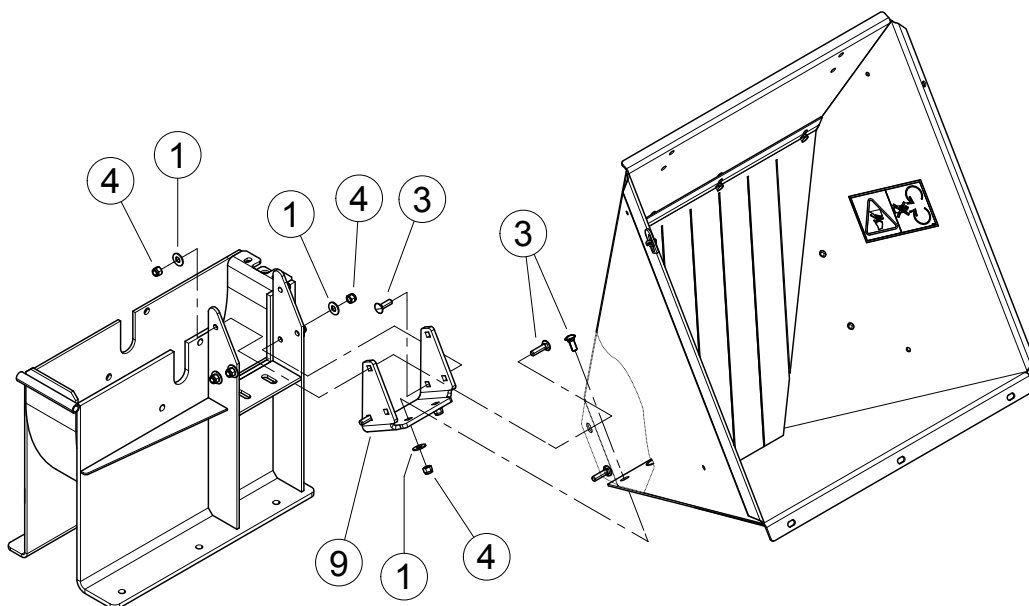
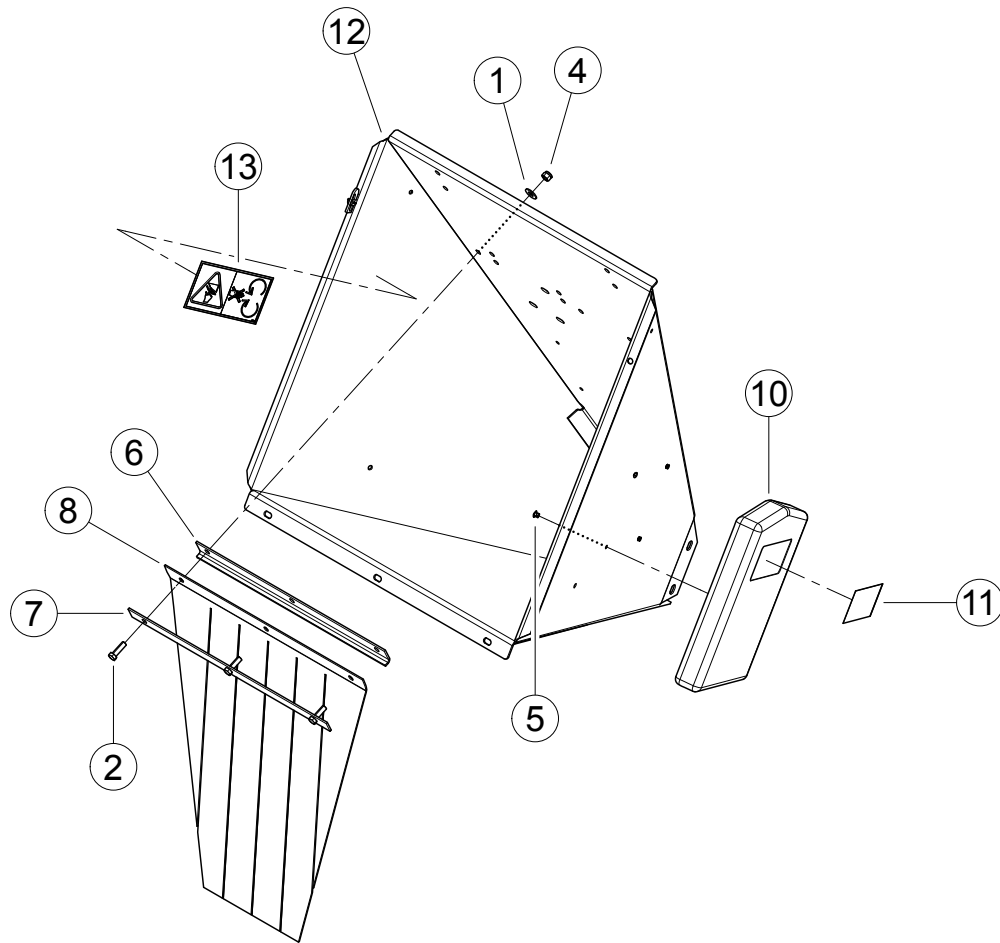
ITEM	PART NUMBER	DESCRIPTION
1	0103-0113-00	BOLT, 1/2 X 1-1/4 CRG GR5 ZP
2	0123-0429-00	CLAMP, HOSE 5/16 X 5/8 DIA MAX
3	14373-00	HOSE ASSY, CRANKCASE DRAIN
4	14901-00	CABLE, 24" NEG (R / R)
5	15005	BOLT, 3/8 X 3/4 HEX HD GR5 ZP
6	15008	BOLT, 3/8 X 2 HEX HD GR5 ZP
7	15031	WASHER, 3/8 FLAT ZP
8	15034	WASHER, 1/2 FLAT ZP
9	15042	NUT, 3/8 HEX HD NC ZP
10	15049	NUT, 1/2 CENTERLOCK GRB ZP
11	15089	NUT, 1/2 NC ZP JAM
12	15132	WASHER, 3/16 FLAT ZP
13	15250	WASHER, 5/16 FLAT ZP
14	15285	SETSCREW, 1/2 X 3 SQ HD 1/2 DOG PT
15	15301	BOLT, 5/16 X 1 CRG
16	15356	NUT, 5/16 NYLOCK
17	15378	BOLT, 3/8 X 1-1/4 CRG GR5 NC ZP
18	15388	NUT, 3/8 NE NYLOCK ZP
19	15396	BOLT, 5/16 X 7/8 HHCS GR5 NC ZP
20	15397	NUT, 10/24 NYLOCK TYPE NM, ZP
21	15440	KEY, 3/8 SQUARE X 2 LONG PLAIN
22	15460	MACHINE SCREW, #10-24 X 3/4 PAN HD PH ZP
23	16326	SHEAVE, 2B 5.2 SDS
24	16327	BUSHING, SDS 1-7/16"
25	16378	CLAMP, 15/32" SPRING
26	17888	CABLE, 33" POS (R / R WITH BOOT)
27	31238-00	RELAY, 12V SPDT W/ FLANGE



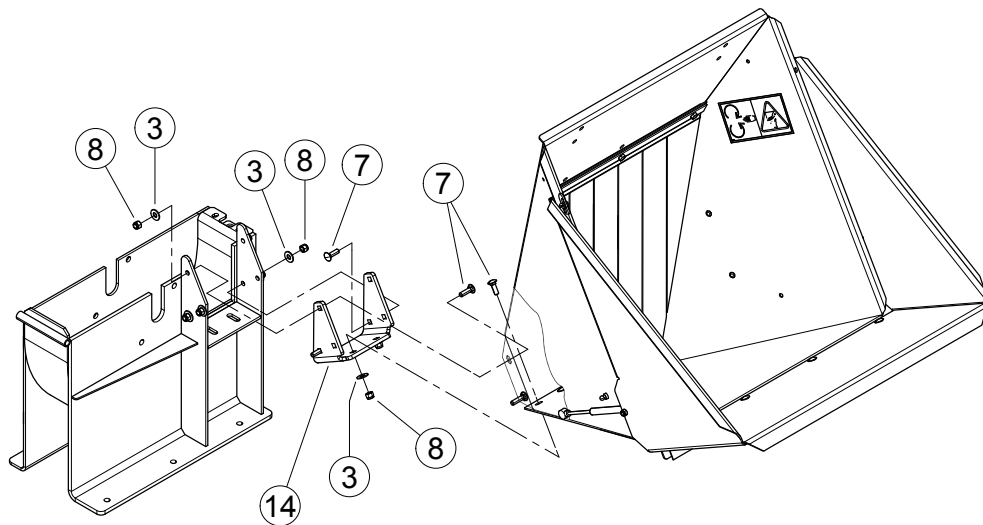
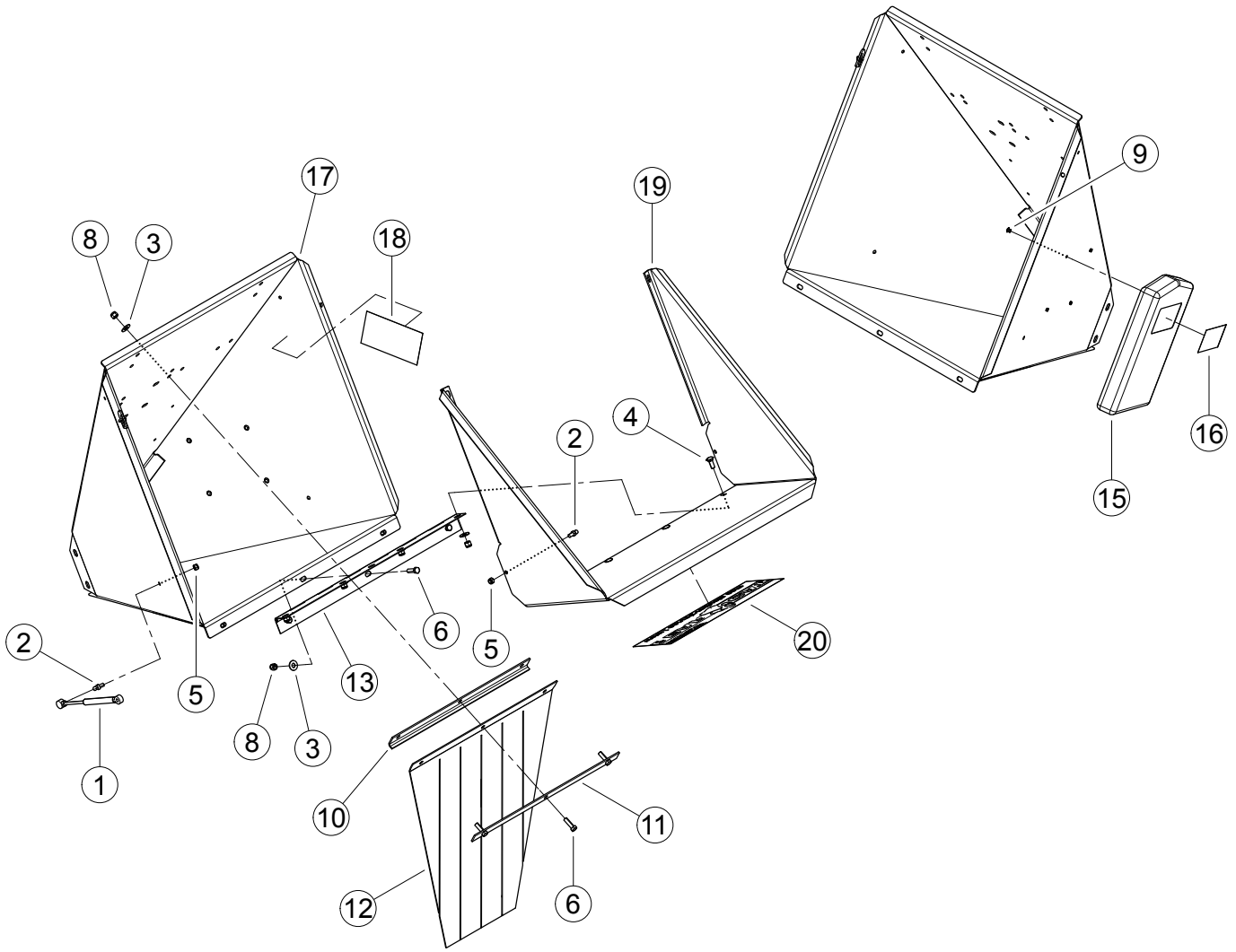
ITEM	PART NUMBER	DESCRIPTION
1	12275	FITTING, 1/4 SELF-TAP GREASE
2	14076-00	GRIP, CLUTCH HANDLE
3	14635-00	SPACER, .50 X 1.00
4	14636-00	ROLLER, 0.5 X 1.00 X 1.00 NYLON
5	15006	BOLT, 3/8 X 1 HEX HD NC GR5 ZP
6	15031	WASHER, 3/8 FLAT
7	15049	NUT, 1/2 CENTERLOCK GRB ZP
8	15086	BOLT, 1/2 X 3 HEX HD
9	15092	BOLT, 1/2 X 2-1/2 HEX HD
10	15250	WASHER, 5/16 FLAT
11	15272	BOLT, 3/8 X 4 HEX HD NC
12	15274	BOLT, 3/8 X 4-1/2 HEX HD NC
13	15351	NUT, 5/16 SERR FLANGE NC ZP
14	15356	NUT, 5/16 NE NYLOCK
15	15388	NUT, 3/8 NE NYLOCK
16	15403	BOLT, 5/16 X 1-3/4 HEX HD
17	15560	BOLT, 5/16 X 2-3/4 HCPS GR5 NC ZP
18	16319	PULLEY, 3-1/4 FLAT IDLER
19	16786	ABSORBER, IDLER SHOCK
20	17415	SPRING, LOCK COMPRESSION
21	31324-00	I-BOLT, 5/16 X 3-5/8
22	69239	SPACER, IDLER PIVOT
23	74579-00	BUSHING, PIVOT
24	70046	IDLER SPACER
25	70362	SPACER .63 X .63 PULLEY
26	76796-12	BRACKET, IDLER
27	76940-35	LEVER, CHIPPER ENGAGEMENT



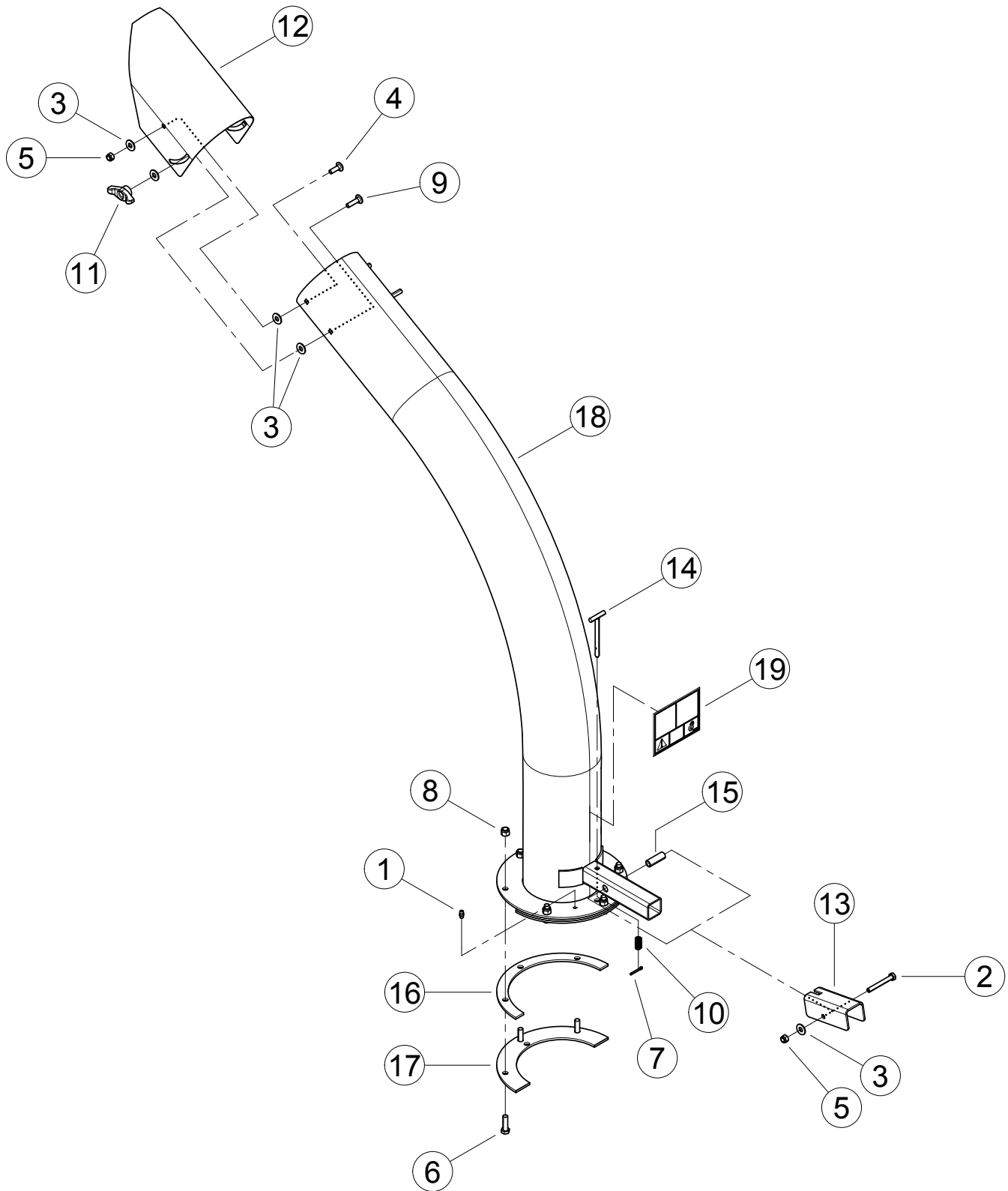
ITEM	PART NUMBER	DESCRIPTION
1	15250	WASHER, 5/16 FLAT ZP
2	15396	BOLT, 5/16 X 7/8 HHCS GR5 NC ZP
3	15402	NUT, 5/16-18 TINNERMAN U-TYPE
4	76973-00	ASSEMBLY, CHIPPER SHIELD W/DECALS, SERVICE PART (INCLUDES ITEMS 5-7)
5	14772-00	DECAL, START/ENGAGE
6	14942-00	DECAL, MUTILINGUAL MANUAL
7	31477-00	DECAL, CHIP IT LARGE



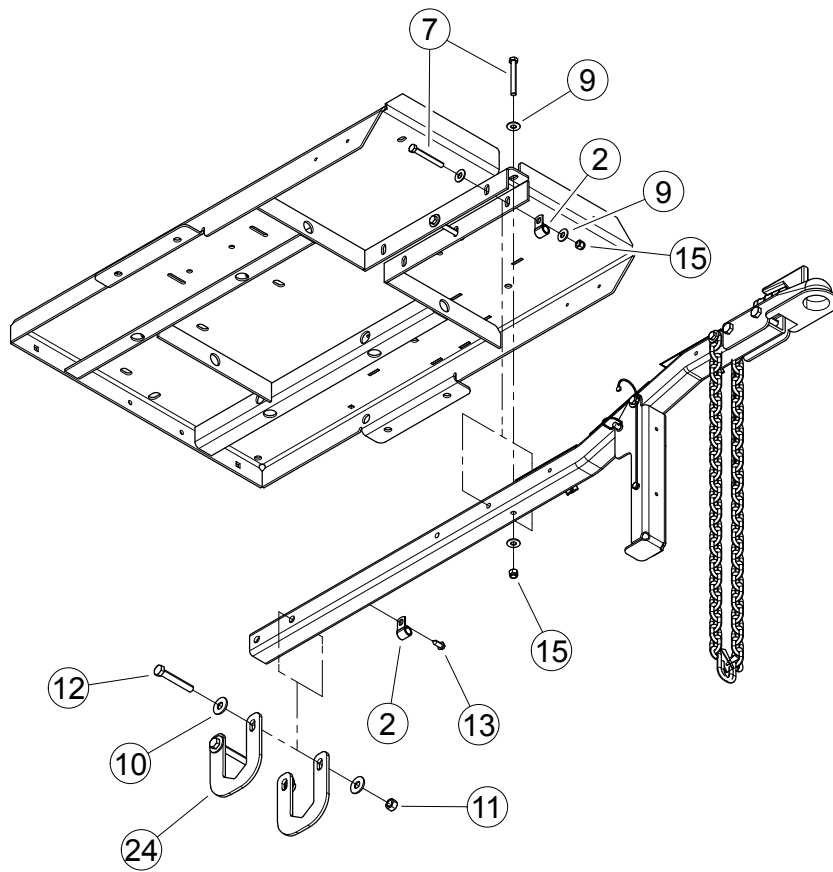
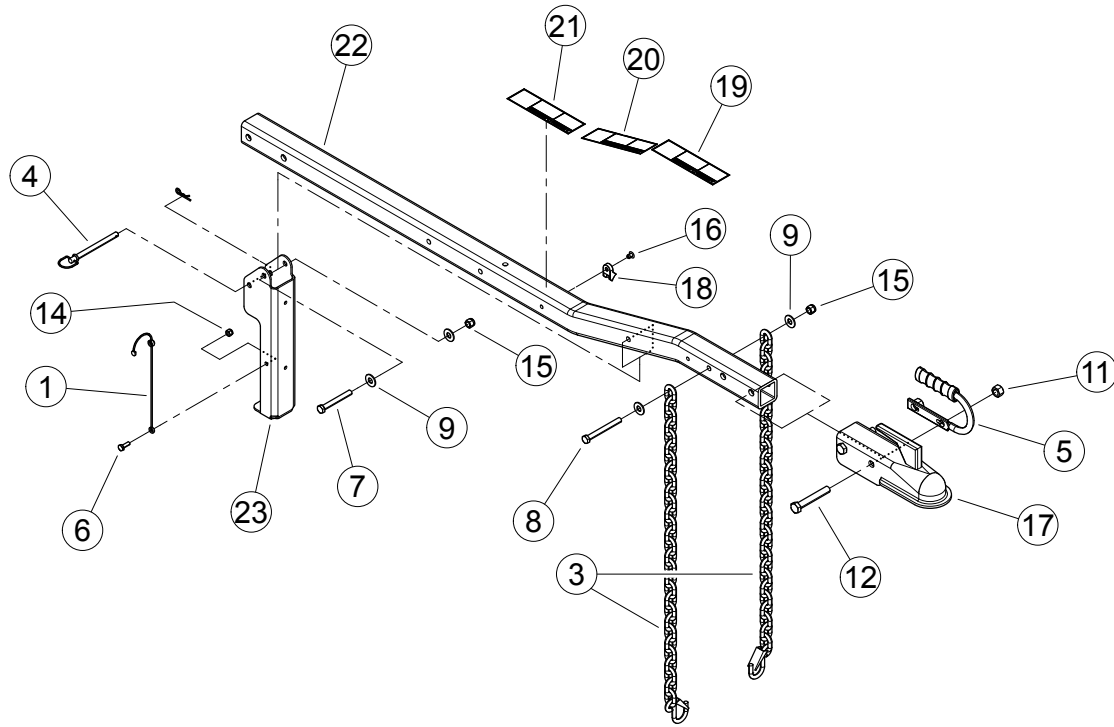
ITEM	PART NUMBER	DESCRIPTION
1	15031	WASHER, 3/8 FLAT ZP
2	15057	BOLT, 3/8 X 1 CRG GR5 NC ZP
3	15058	BOLT, 3/8 X 1-1/2 CRG GR5 NC ZP
4	15364	BOLT, 3/8 X 1-1/4 HEX HD GR5 ZP
5	15378	BOLT, 3/8 X 1-1/4 CRG GR5 NC ZP
6	15388	NUT, 3/8 NE NYLOCK ZP
7	15497	RIVET, 1/4 X 1/2 DOME HD BLIND SS
8	72460-12	ANGLE, FLAP ANCHOR
9	72461-12	STRIP, FLAP RETAINER
10	72462	FLAP, CHIPPER CHUTE
11	76802-12	BRACKET, CHUTE MOUNT
12	77113-00	ASSEMBLY, MANUAL CONTAINER SERVICE PART (INCLUDES ITEM 13)
13	14942-00	DECAL, MULTILINGUAL MANUAL
14	77114-00	ASSEMBLY, 5 INCH CHIPPER CHUTE SERVICE PART (INCLUDES ITEM 15)
15	12175	DECAL, BLADE DANGER ISO



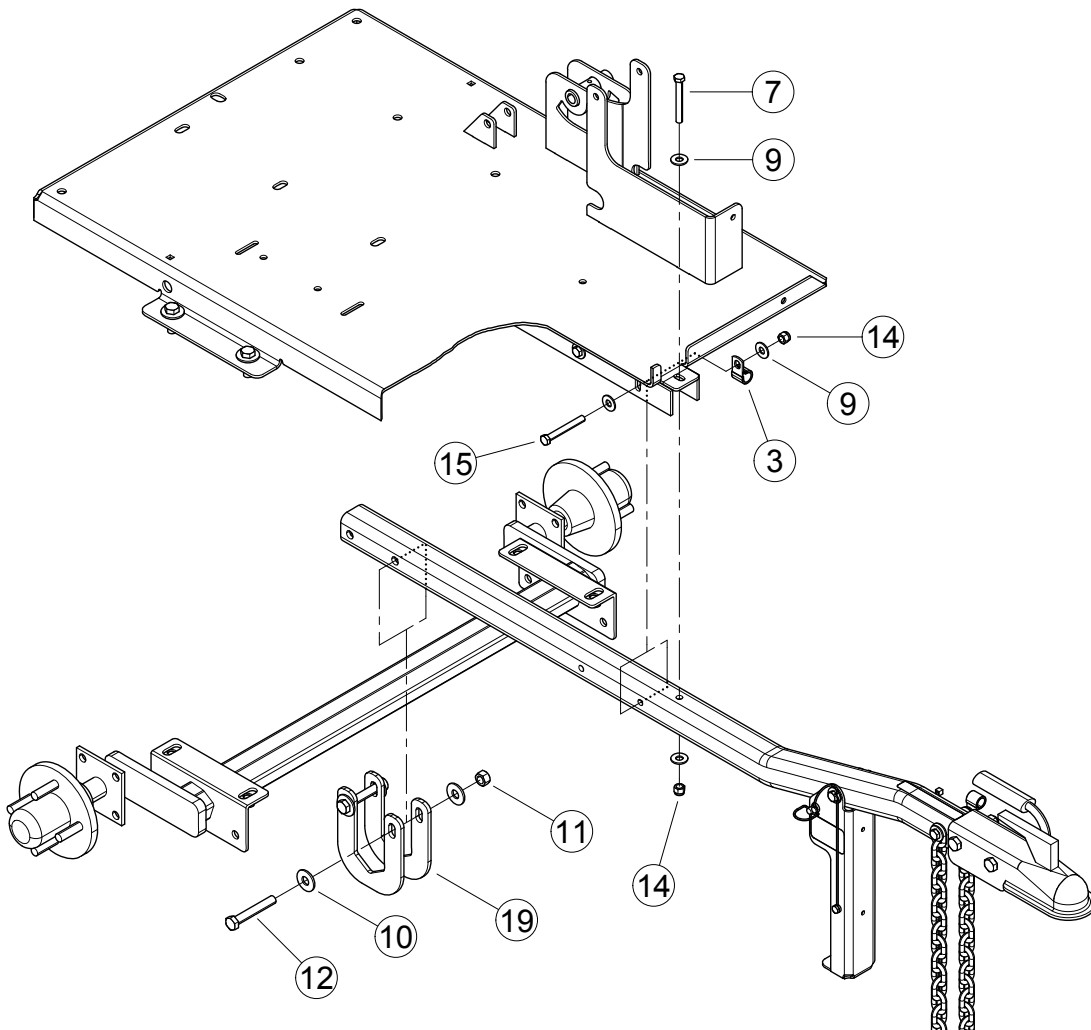
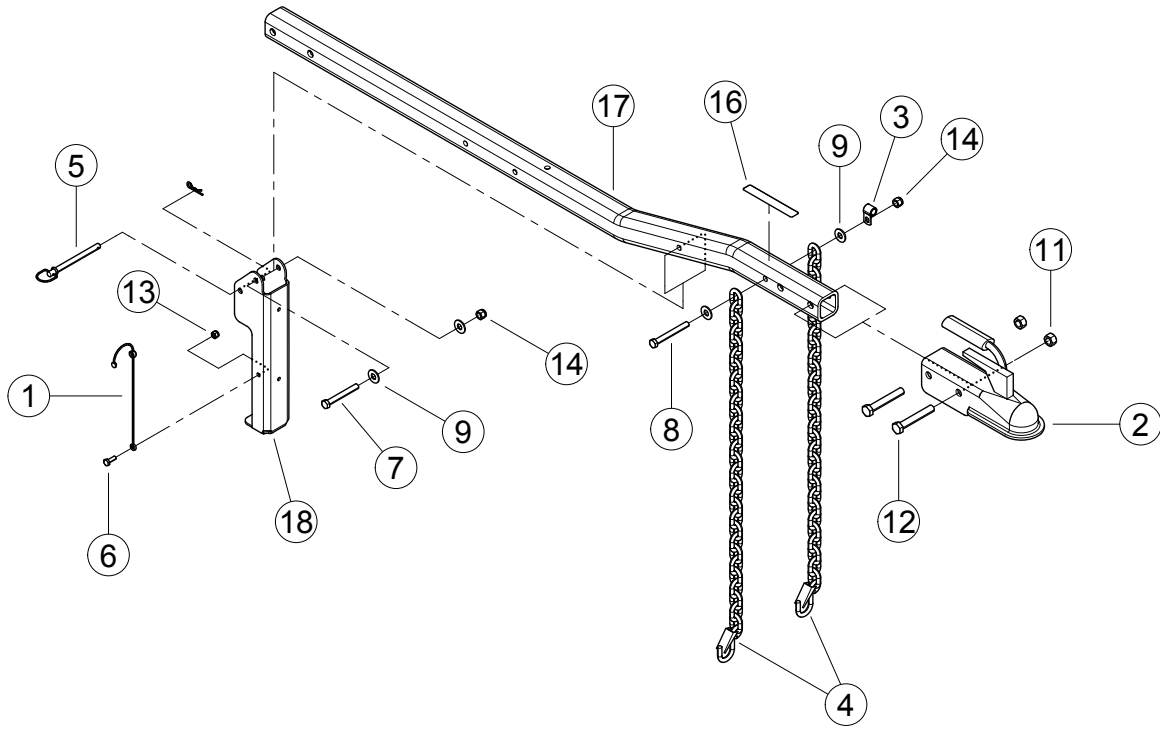
ITEM	PART NUMBER	DESCRIPTION
1	12780	SPRING, GAS 60 PSI
2	12781	STUD, BALL .39
3	15031	WASHER, 3/8 FLAT ZP
4	15057	BOLT, 3/8 X 1 CRG GR5 NC ZP
5	15356	NUT, 5/16 NE NYLOCK ZP
6	15364	BOLT, 3/8 X 1-1/4 HEX HD GR5 ZP
7	15378	BOLT, 3/8 X 1-1/4 CRG GR5 NC ZP
8	15388	NUT, 3/8 NE NYLOCK ZP
9	15497	RIVET, 1/4 X 1/2 DOME HD BLIND SS
10	72460-12	ANGLE, FLAP ANCHOR
11	72461-12	STRIP, FLAP RETAINER
12	72462	FLAP, CHIPPER CHUTE
13	72568-12	HINGE, EXTENSION TRAY
14	76802-12	BRACKET, CHUTE MOUNT
15	77113-00	ASSEMBLY, MANUAL CONTAINER SERVICE PART (INCLUDES ITEM 16)
16	14942-00	DECAL, MULTILINGUAL MANUAL
17	77114-00	ASSEMBLY, 5 INCH CHIPPER CHUTE SERVICE PART (INCLUDES ITEM 18)
18	12175	DECAL, BLADE DANGER ISO
19	77115-00	ASSEMBLY, 5 INCH EURO CHUTE TRAY SERVICE PART (INCLUDES ITEM 20)
20	31484-00	DECAL, BEARCAT WEB



ITEM	PART NUMBER	DESCRIPTION
1	12275	FITTING, 1/4 SELF-TAP GREASE
2	15154	BOLT, 5/16 X 2-1/2 HEX HD GR5 ZP
3	15250	WASHER, 5/16 FLAT ZP
4	15301	BOLT, 5/16 X 1 CRG GR5 ZP
5	15356	NUT, 5/16 NE NYLOCK ZP
6	15364	BOLT, 3/8 X 1-1/4 HEX HD GR5 ZP
7	15375	PIN, 1/8 X 1.00 COTTER ZP
8	15388	NUT, 3/8 NE NYLOCK ZP
9	15398	BOLT, 5/16 X 1-1/4 CRG GR5 ZP
10	16556	SPRING, LOCK COMPRESSION
11	31994-00	KNOB, 5/16-18 UNC TEE W/LOCKING INSERT
12	71081	DEFLECTOR, BLOWER-VAC DISCHARGE
13	71252	LEVER, DISCHARGE LOCK
14	71253	WELDMENT, DISCHARGE LOCK PIN
15	71256	TUBE, DISCHARGE LOCK PIVOT
16	72452-12	SPACER, DISCHARGE PIVOT
17	72453-12	RING, DISCHARGE CLAMP
18	77116-00	ASSEMBLY, 6 INCH DISCHARGE SERVICE PART
19	32109-00	DECAL, DISCHARGE DEBRIS & LOCK



ITEM	PART NUMBER	DESCRIPTION
1	12530	LANYARD, NYLON
2	14048-00	CLAMP, 9/16" COATED
3	14381-00	CHAIN, SAFETY 5000 LB W/LATCH
4	14823-00	PIN, 3/8 HITCH
5	14940-00	HANDLE, HITCH COUPLER
6	15001	BOLT, 1/4 X 3/4 HEX HD GR5 ZP
7	15009	BOLT, 3/8 X 3 HEX HD GR5 ZP
8	15010	BOLT, 3/8 X 3-1/2 HEX HD GR5 ZP
9	15031	WASHER, 3/8 FLAT ZP
10	15034	WASHER, 1/2 FLAT ZP
11	15049	NUT, 1/2 CENTERLOCK GRB ZP
12	15173	BOLT, 1/2 X 3-1/4 HEX HD GR5 ZP
13	15355	NUT, 1/4 NE NYLOCK ZP
14	15388	NUT, 3/8 NE NYLOCK ZP
15	15501	BOLT, 3/8 X 3-1/4 HEX HD GR5 ZP
16	16875	DECAL, HITCH LOAD
17	17988	TRAILER HITCH COUPLER
18	76803-12	POLE, C/S HITCH
19	76804-12	STAND, JACK
20	76958-12	PLATE, HITCH

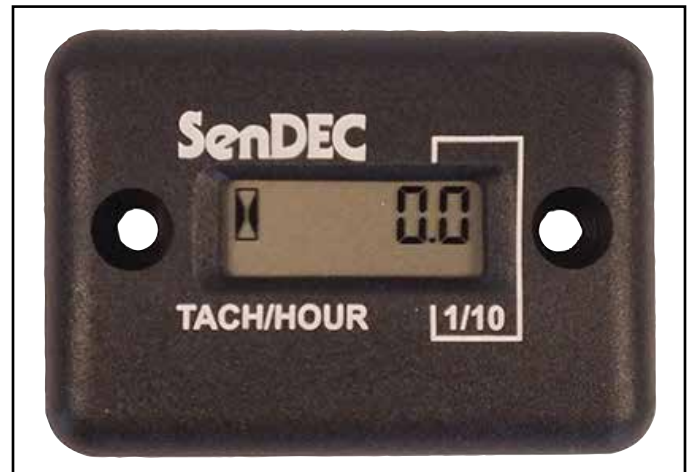


ITEM	PART NUMBER	DESCRIPTION
1	12530	LANYARD, NYLON
2	12536	COUPLER, 50 MM BALL
3	14048-00	CLAMP, 9/16 COATED
4	14381-00	CHAIN, SAFETY 5000 LB W/LATCH (NOT SHOWN)
5	14823-00	PIN, 3/8 HITCH
6	15001	BOLT, 1/4 X 3/4 HEX HD GR5 ZP
7	15009	BOLT, 3/8 X 3 HEX HD GR5 ZP
8	15010	BOLT, 3/8 X 3-1/2 HEX HD GR5 ZP
9	15031	WASHER, 3/8 FLAT ZP
10	15034	WASHER, 1/2 FLAT ZP
11	15049	NUT, 1/2 CENTERLOCK GRB ZP
12	15173	BOLT, 1/2 X 3-1/4 HCS GR5 ZP
13	15355	NUT, 1/4 NE NYLOCK ZP
14	15388	NUT, 3/8 NE NYLOCK ZP
15	15501	BOLT, 3/8 X 3-1/4 HEX HD GR5 ZP
16	16875	DECAL, HITCH LOAD
17	76803-12	POLE, C/S HITCH
18	76804-12	STAND, JACK
19	76958-12	PLATE, HITCH

PART NUMBER	DESCRIPTION
72493	CHIPPER BLADE KIT
31605-00	TACH/HOUR METER KIT



CHIPPER BLADE KIT, 72493



TACH/HOUR METER KIT, 31605-00



ECHO BEAR CAT

www.bearcatproducts.com

237 NW 12th Street, West Fargo, ND 58078-0849

Phone: 701.282.5520 • Toll Free: 800.247.7335 • Fax: 701.282.9522

E-mail: service@bearcatproducts.com • sales@bearcatproducts.com